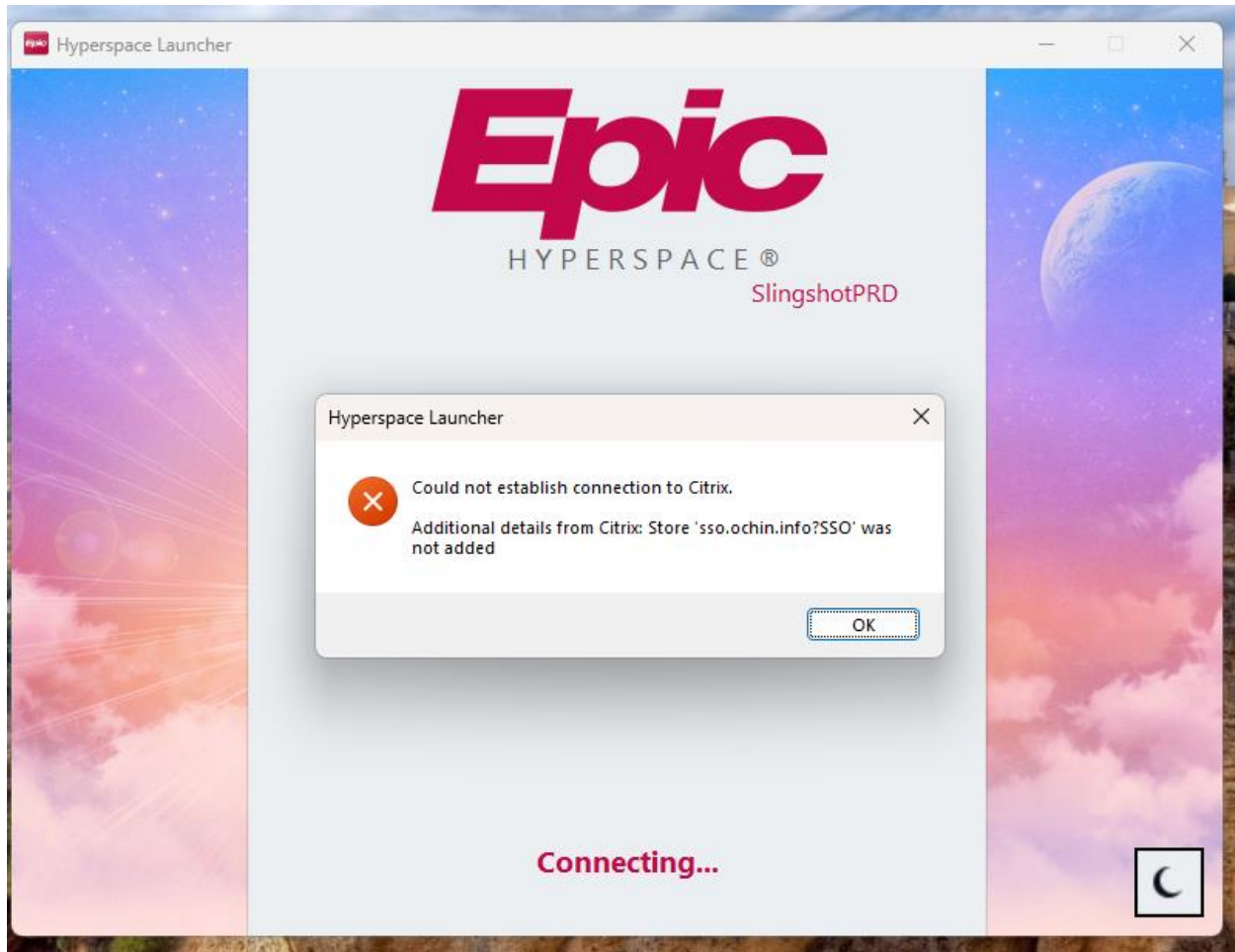


Error: 'sso.ochine.info?SSO was not added.



A computer's ID must be approved and registered with the EPIC system for a user to connect to EPIC.

Error is due to:

- New Computer: You must submit an EPIC ticket requesting approval for any new computer. This applies only to MNHC computers.
- If a computer was previously able to access EPIC but now receives an error, the computer ID may have been disabled due to inactivity.